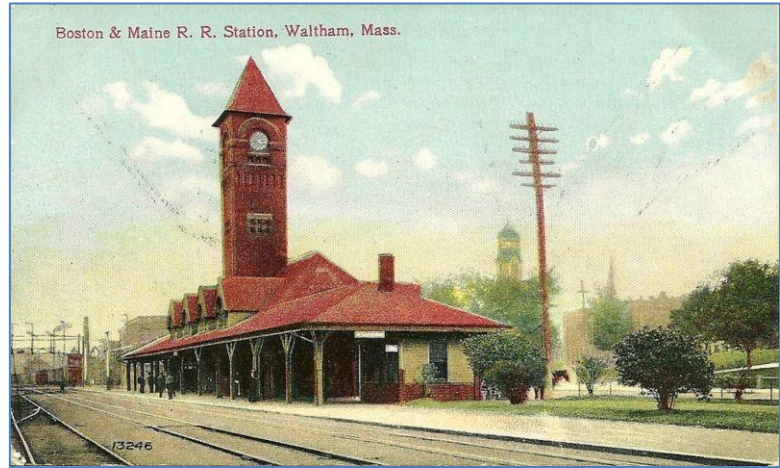


Waltham, Massachusetts

Resolution



Concerning a Municipal Transit Station in Downtown Waltham

January 27, 2020

WHEREAS... Nearly every public bus route and commuter rail line in Waltham has the Waltham Common as its nexus, and

WHEREAS... Every great city has at its center a train or transit station, and

WHEREAS... An all-weather train and transit station would encourage more public transportation ridership, reduce vehicular congestion, and would provide better amenities to all residents, commuters, and visitors to Waltham;

NOW, THEREFORE, BE IT RESOLVED... that the City of Waltham investigate constructing a world class enclosed transit station at the site of the existing Community Police substation on Carter Street and adjacent parking lot, including the following amenities:

- fully heated and air-conditioned waiting area with benches
- digital display of train and bus schedules
- public restrooms
- coffee shop and news kiosk
- wireless internet access
- full disability access
- visitors' information area with displays relative to Waltham's history
- maps to Waltham's museums, estates, restaurants, open spaces and trails
- parking facilities and drop-off & pick up areas

Read and adopted _____

Attest: Robert J. Waddick, City Clerk

Respectfully submitted:

Councillor George A. Darcy III

Councillor Joseph P. LaCava